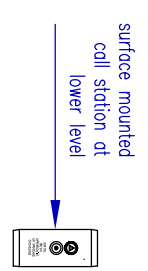
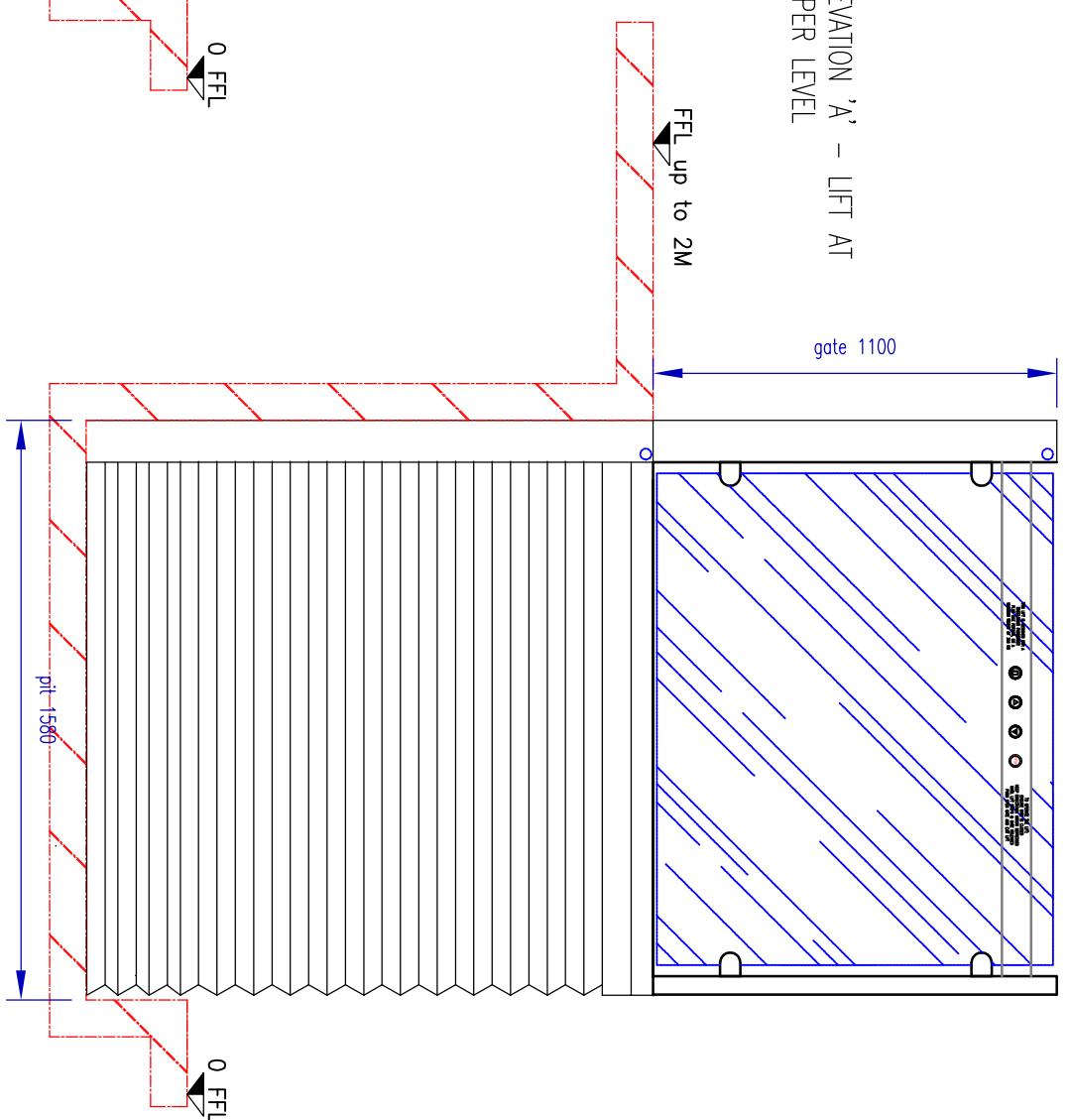
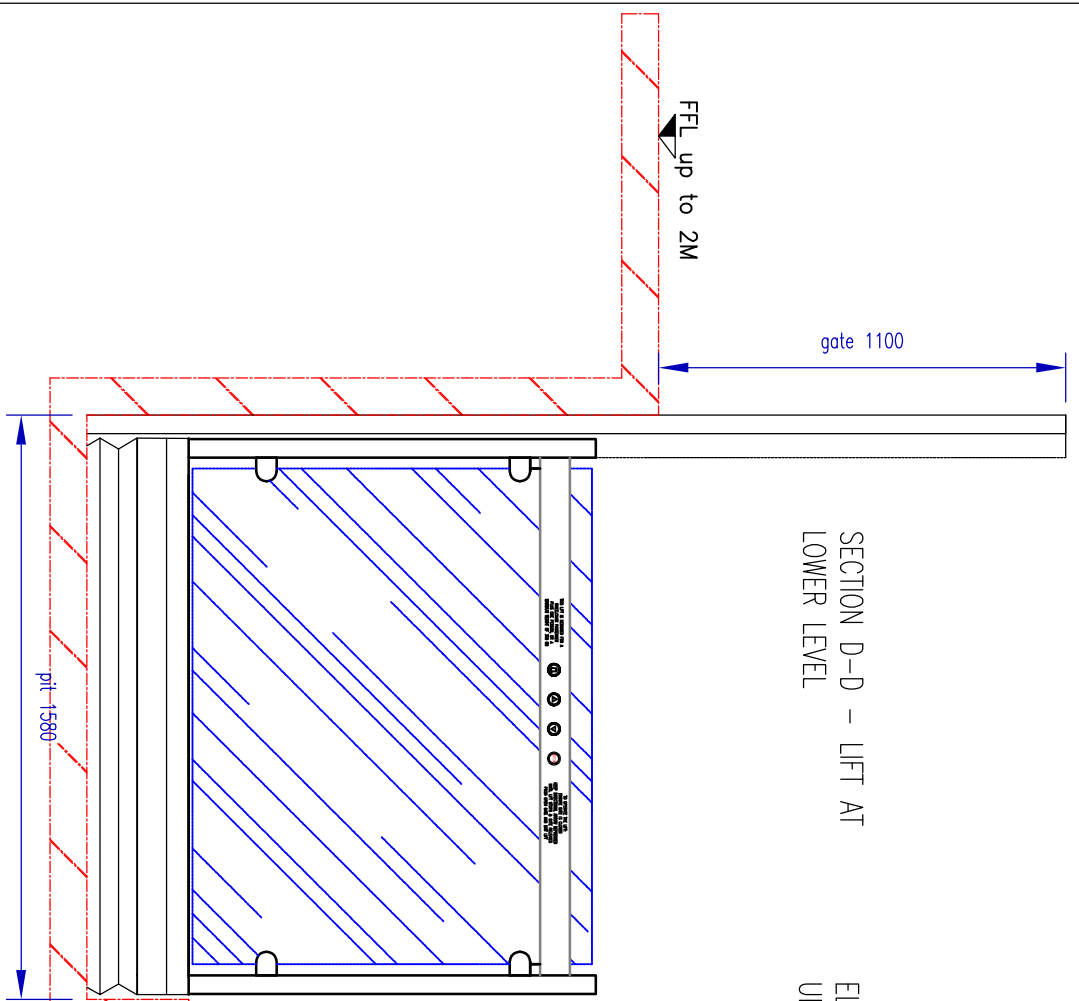
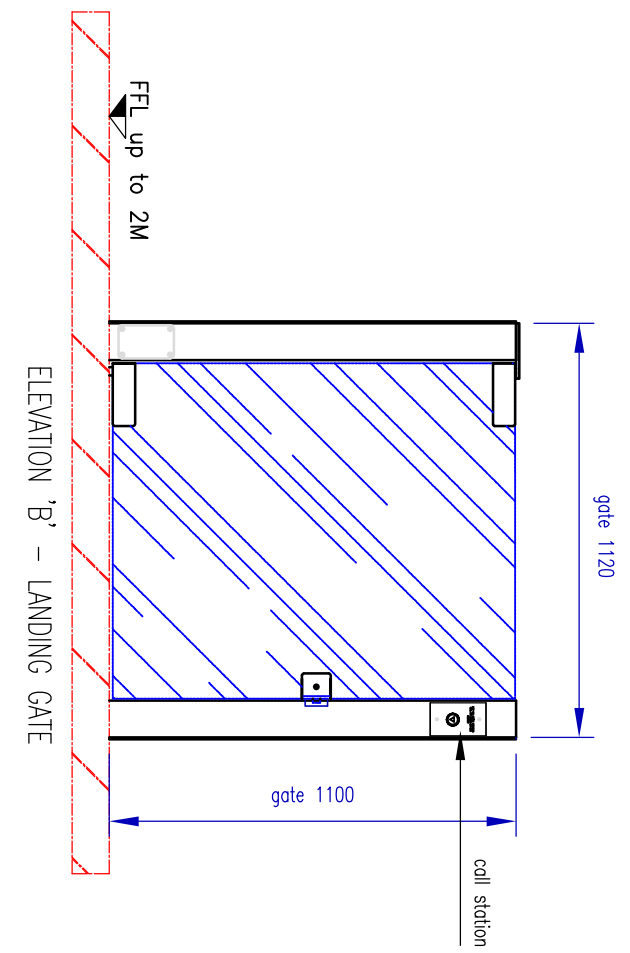
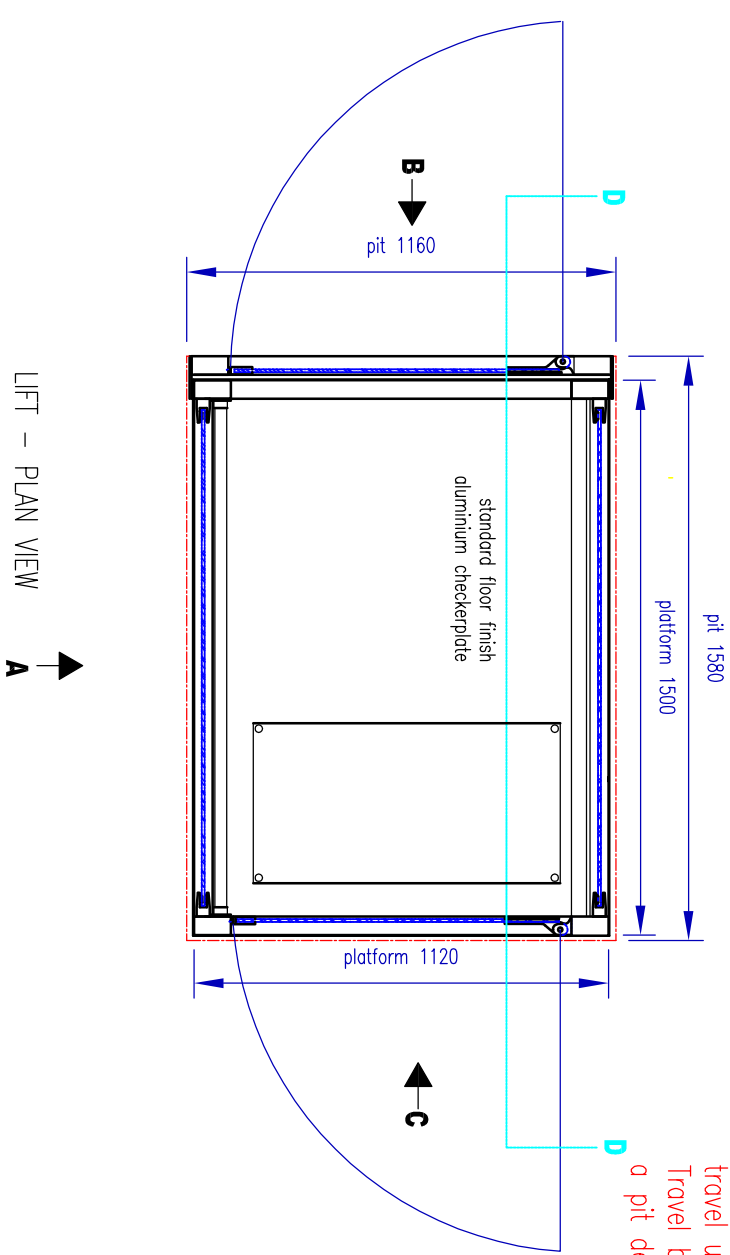


A pit depth of 275mm is required for travel up to 1500mm..
 Travel between 1500 & 2000mm requires a pit depth of 315mm

Lift model VPL-500 finished in brushed stainless steel and toughened clear glass.



GENERAL ARRANGEMENT DRAWING - NOT TO BE USED FOR CONSTRUCTION PURPOSES.

Issue	Date	Change	SCALE	TITLE
0	12/7/12	First issue	1:20	PLATFORM LIFT MODEL VPL-700
A	22/5/13	Glass spec. changed, handrail added	A3	CLIENT: 500/GA1
B	20/11/13	Call stations changed		GENERAL ARRANGEMENT DRAWING